

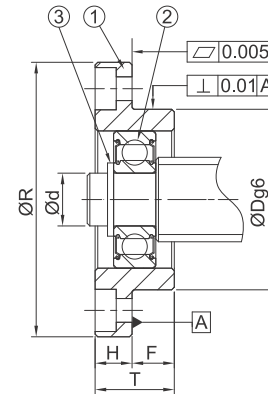
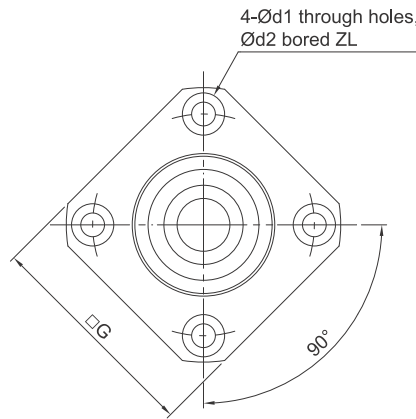
## Linear Motion Component ► Support Units

Support Side Standard Type | Flange Design | GFF

### GFF-B



GFF06 ~ GFF30



Standard Type	Dimensions									
	Ød	ØR	□G	T	H	F	ØDg6	PCD	Ød1	Ød2
GFF06	6	36	28	10	6	4	22 <sup>+0.007</sup> / <sub>-0.020</sub>	28	3.4	6
GFF10	8	43	35	12	7	5	28 <sup>+0.007</sup> / <sub>-0.020</sub>	35	3.4	6
GFF12	10	52	42	15	7	8	34 <sup>+0.009</sup> / <sub>-0.025</sub>	42	4.2	8
GFF15	15	63	52	17	9	8	40 <sup>+0.009</sup> / <sub>-0.025</sub>	50	5.2	9.5
GFF17	17	77	61	20	11	9	50 <sup>+0.009</sup> / <sub>-0.025</sub>	62	6.6	11
GFF20	20	85	68	20	11	9	57 <sup>+0.010</sup> / <sub>-0.029</sub>	70	6.3	11
GFF25	25	98	79	24	14	10	63 <sup>+0.010</sup> / <sub>-0.029</sub>	80	8.7	14
GFF30	30	117	93	27	18	9	75 <sup>+0.010</sup> / <sub>-0.029</sub>	95	10.7	17.5

Ordering Example	GFF	10	N	J
	Model No.	Shaft Dia.	Surface finish	Bearing category

## Linear Motion Component ► Support Units

Support Side Standard Type | Flange Design | GFF

### GFF-B

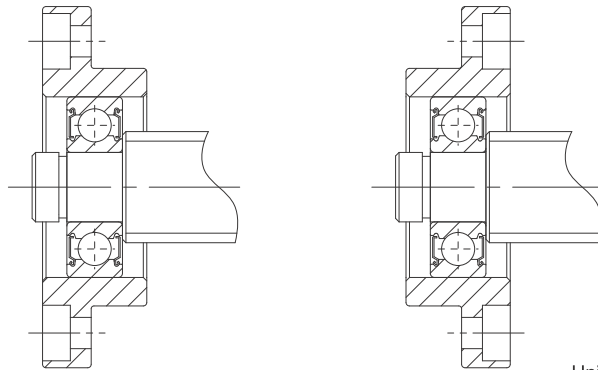
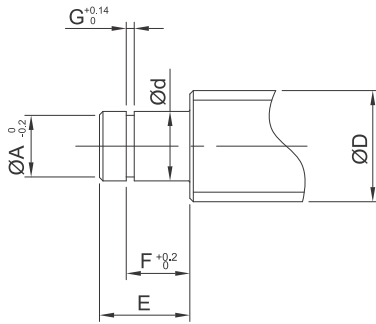


### Components

No.	Parts	Material	Q'ty
①	Main housing	S50C	1
②	Bearing	SUJ2	1
③	Snap ring	SWB	1

- Bearing filled with proper lithium soap lubricant maintenance free.
- Bearing with two steel covers in black dyed.
- Bearing with two touch-type plastic covers in Ni-plating.

### Recommended Processing Dimensions of Shaft



Unit : mm

Z	Recommended Processing Dimensions of Shaft						Snap Ring
	Ball Screw Shaft O. D.	Shaft End Diameter	ØA	E	F	G	
3.3	8	6 <sup>-0.005/-0.012</sup>	5.7	9	6.8	0.8	S 06
3.3	12 / 14 / 15	8 <sup>-0.005/-0.012</sup>	7.6	10	7.9	0.9	S 08
4.4	14 / 15 / 16	10 <sup>-0.005/-0.012</sup>	9.6	11	9.15	1.15	S 10
5.4	18 / 20	15 <sup>-0.005/-0.014</sup>	14.3	13	10.15	1.15	S 15
8.6	20 / 25	17 <sup>-0.005/-0.014</sup>	16.2	16	13.15	1.15	S 17
6.5	25 / 28 / 30	20 <sup>-0.005/-0.014</sup>	19	19	15.35	1.35	S 20
8.6	30 / 32 / 36	25 <sup>-0.005/-0.014</sup>	23.9	20	16.35	1.35	S 25
10.8	36 / 40	30 <sup>-0.005/-0.015</sup>	28.6	21	17.75	1.75	S 30

• Fixed Side spec please refer to P.0037~P.0038 and P.0045~P0046